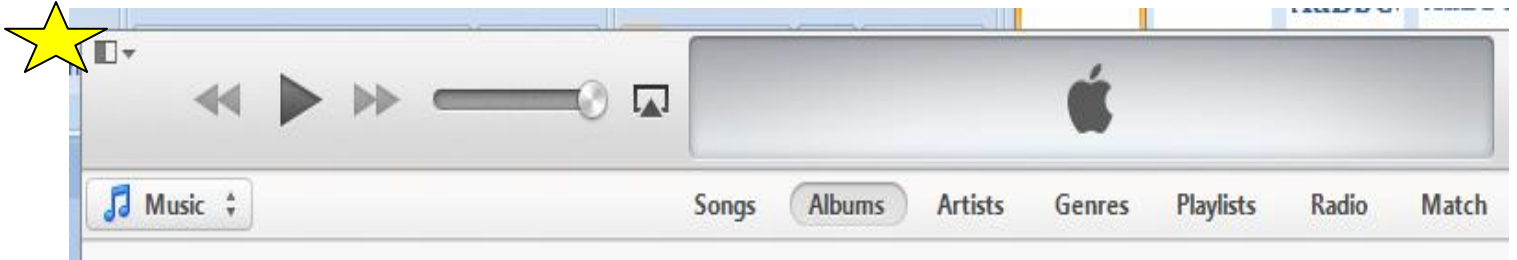


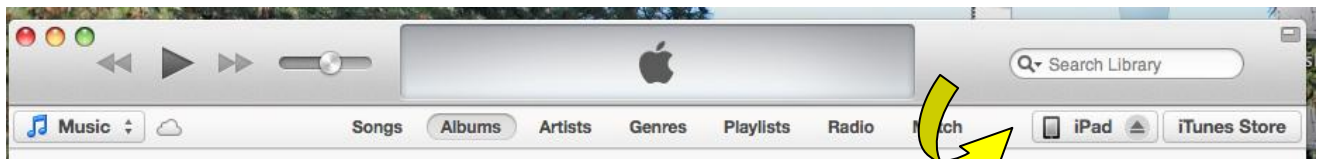
Add a User Profile to Proloquo2go

From Your Computer

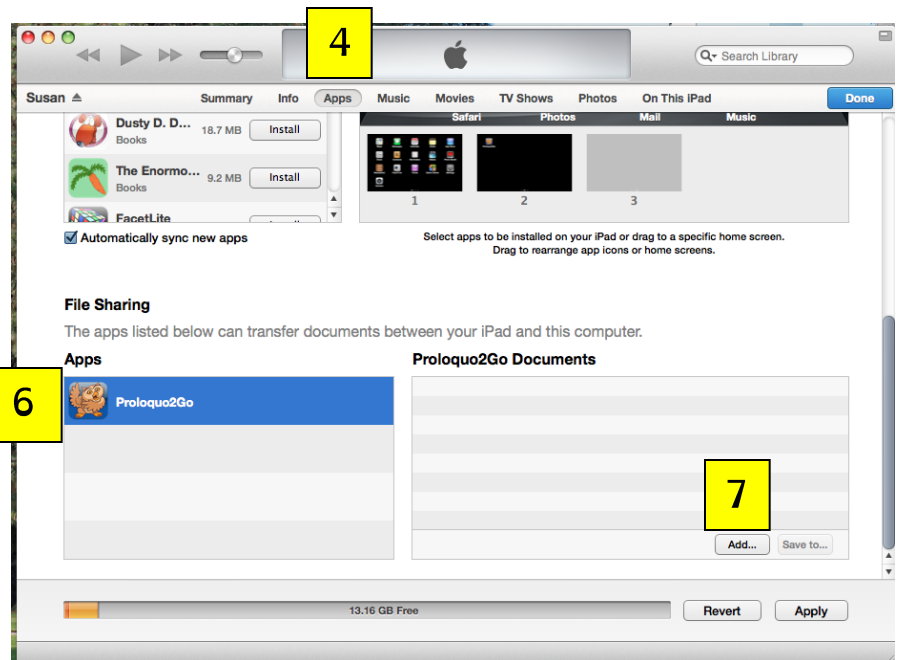
1. Make sure you have toggled “Prevent iPods, iPads, iTouches from syncing automatically.” This is found in Preferences, then Devices.



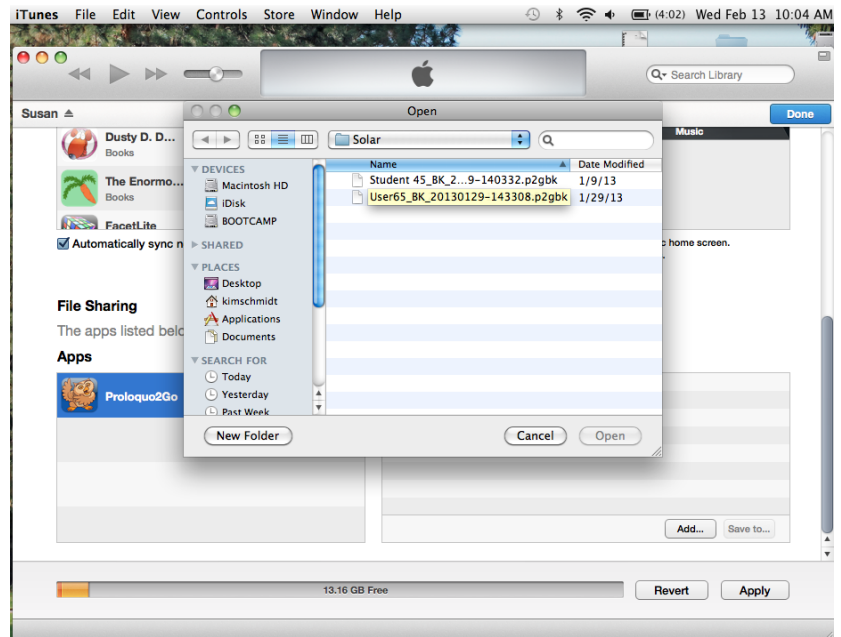
2. Connect iPad to your computer. If iPhoto opens close this window. iTunes should open automatically.
3. In iTunes, click on “iPad”



4. Click on Apps
5. Scroll to bottom of screen to view File Sharing
6. Click on Proloquo2Go
7. Click “Add”

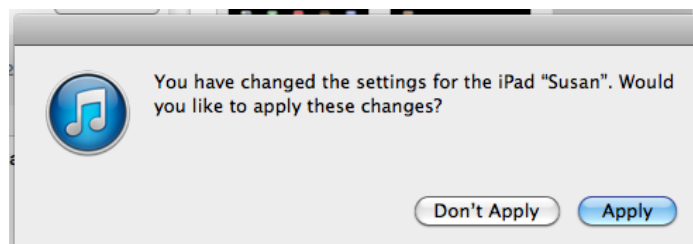


8. A new window will open up. Navigate to the file where Proloquo2Go backup is saved.

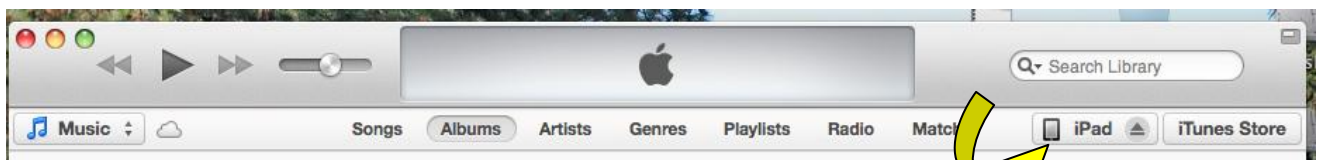


9. Double click on desired user profile. The window will disappear.


10. In iTunes, click on "Done". A window will appear. Click "Apply".



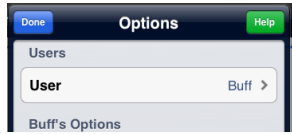
11. Eject iPad by clicking on iPad button



12. On your device, open Proloquo2Go

13. Press Options button. 

14. Press "User"

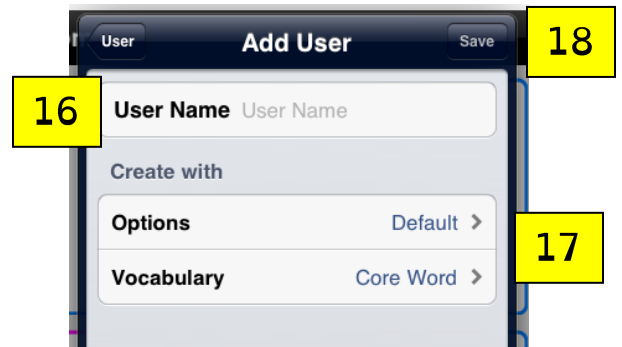


15. Press "Add User"



16. Type in user name

17. Pick Vocabulary that is desired.
(Usually we start with Basic Communication.
This is done by pressing "Vocabulary" then
selecting "Basic Communication".)



18. Press Save

19. Press "Add User"

20. Select desired user

21. Press "Options"

22. In Options view, scroll down to press "Backup"

23. Press Restore from Backup

21



24. Press the Backup file you desire.

25. Press Restore [User]

22



You have successfully copied a user profile to your iDevice.

*Note: If backup was unsuccessful, make sure Proloquo2Go is updated to latest version.